

MAXIM

WE PLAY CHICKEN WITH MIKE TYSON!



Now to Kardashian-

Maxim's MARCH MADNESS

16 BEST SPORTS BARS IN AMERICA

SEX ACADEMY

Get an A in Giving Her an O

THE QUEST FOR THE PERFECT NACHO

6 DAYS, 2,200 MILES, 19,000 CALORIES

DESTROY YOUR STRESS

Quick Fixes p.9

Michelle
HELLO, BOYS!
MICHELLE TRACHTENBERG IS ALL GROWN UP!

GET BUZZED MORNING & NIGHT (BEST COFFEE & NIGHT) (ST. PADDY DAY BOOZ

NASCAR'S Wildest Driver

CHEATING DEATH WITH BRIAN VICKERS

MARCH 2011 / MAXIM.COM

\$5.99US



Ginger's always
liked us best.



For a real bourbon
and ginger ale,
Maker's™ makes it.

Maker's Mark® & Ginger

1-1/2 parts Maker's Mark® Bourbon
Ginger ale

Fill rocks glass with
ice, add Maker's Mark®
and top off with ginger
ale. For a twist, garnish
with an orange slice or
lime wedge.



Maker's
Mark®

It is what it isn't.

makersmark.com

WE MAKE OUR BOURBON CAREFULLY.
PLEASE ENJOY IT THAT WAY.

Maker's Mark® Bourbon Whisky, 45% Alc./Vol.
©2011 Maker's Mark Distillery, Inc. Loretto, KY

STUFF

COFFEE pt.2

Don't Spill the Beans!

WHICH COMMUTER COFFEE CUP SHOULD YOU ROCK ON THE WAY TO WORK?



OXO Plastic LiquiSeal Travel Mug

oxo.com

Equipped with three silicone seals to prevent spillage, this polycarbonate mug offers liquid delight at the push of a button. Click to sip, click to seal.

Cooling test: Two walls of insulation can't change the fact that it's made of plastic. Average loss per hour: 19.52 degrees.

Daily grind: Despite hitting the pavement, the Oxo came out dry and unharmed.

Commuter crush: Survived. Oxo claims this mug is virtually unbreakable—and it is.



BODUM Stainless-Steel Travel Mug

bodumusa.com

Think size matters? Then this 16-ounce stainless-steel fortress of fortified fluid is for you. You'll feel like you're drinking from a can of motor oil!

Cooling test: Just better than the plastic mugs. Average loss per hour: 18.5 degrees.

Daily grind: Leakage! A little light jostling is all it took to produce embarrassing drips.

Commuter crush: Demolished. This big boy literally folded under the pressure of our pickup, like the big dude at the gym who cries when he pops a back pimple.

BRUGO

Travel Mug

brugomug.com

Brugo makes only travel mugs, and its geekiness shows: This one's "Tip & Cool" design lets you pour a small amount of joe into a separate two-ounce chamber so it'll cool down while the rest stays hot.

Cooling test: Lost 50 degrees in the first 60 minutes. Average loss per hour: 19.52 degrees.

Daily grind: A simple fall from the ticket counter at Grand Central cracked it, yet nothing spilled. Still, you might want something more durable.

Commuter crush: Demolished. If getting run over by trucks is a recurring problem, this mug is a bad choice.



CONTIGO

Autoseal West Loop Stainless-Steel Travel Mug

gocontigo.com

You may find yourself getting aroused by its subtle feminine contours. Don't worry, that's perfectly normal. And thanks to its Autoseal feature, this mug has complete control over your leaks and spills (just like a talented woman).

Cooling test: Totally dominated the competition. Average loss per hour: 13.3 degrees.

Daily grind: We could not make it spill a drop.

Commuter crush: Survived. When nuclear war breaks out, we're building a giant Contigo mug as a bomb shelter.

—Steven DeLuca



WINNER!

MAXIM LABS METHODOLOGY

We designed a series of complex, highly scientific tests to determine the king of commuter mugs:

COOLING TEST

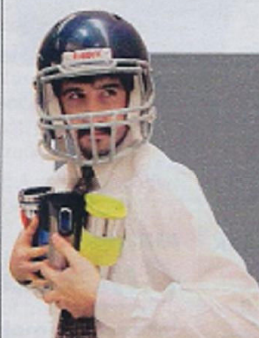
Compared the dropping temperatures of each sealed sipper over a five-hour period.

DAILY GRIND

Reproduced the perils of a morning commute with a quarter-mile run through Grand Central Terminal, including tests to evaluate spillage.

COMMUTER CRUSH

Simulated a worst-case scenario, as we ran over each mug with a 6,000-pound GMC Sierra 2500 Denali HD pickup.



WE MAKE OUR BOURBON CAREFULLY.
PLEASE ENJOY IT THAT WAY.

Maker's Mark® Bourbon Whisky, 45% Alc./Vol.
©2011 Maker's Mark Distillery, Inc. Loretto, KY